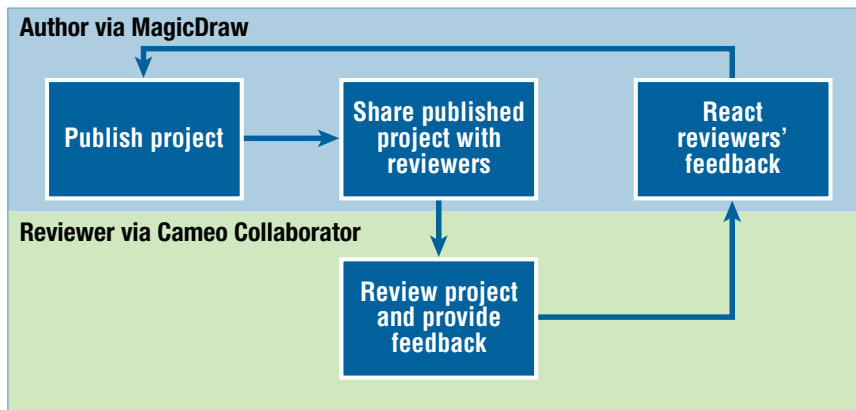


CAMEO

COLLABORATOR

Cameo Collaborator helps teams easily review model contents by connecting model authors, reviewers, and stakeholders on the web.

Cameo Collaborator helps teams easily review model contents by connecting model authors, reviewers, and stakeholders on the web. It has unique capabilities that allow graphically commenting models instead of providing just textual feedback. This helps to involve even non-technical people into review processes and allows them to do the reviews extremely quickly and easy. The product includes a set of predefined review workflows for tracking review progress.

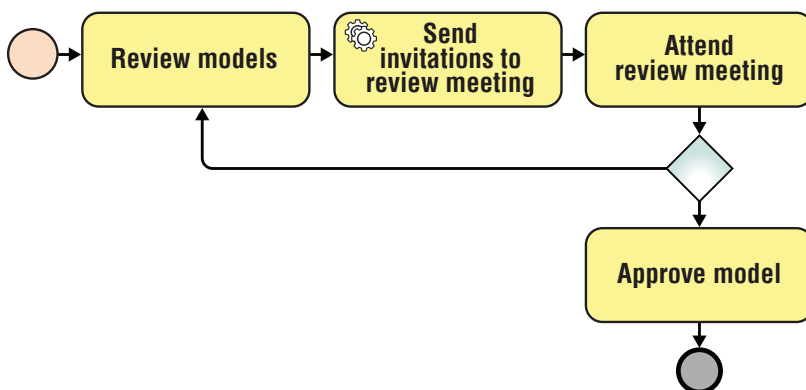


Track Progress of Your Reviews

The following review processes are supported out of the box:

- Technical peer reviews – share and review models within the team
- Formal reviews – share models for review to other teams
- Public community interaction, social modeling, crowdsourcing – share models publicly to the entire organization so that users can consume information available in the models as well as to contribute to the models via comments

If your teams use different review processes, they can describe their processes using BPMN language and deploy these processes onto the Cameo Collaborator server. Here is an example of a custom review process:



Use Cameo Collaborator to:

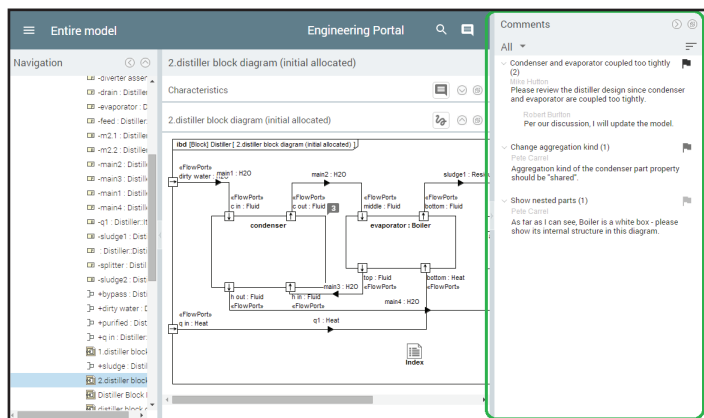
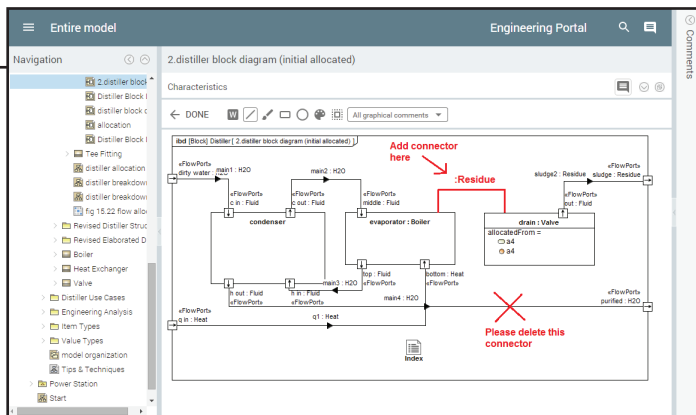
- Put the model in front of the stakeholders, sponsors, or customers
- Put the model in front of engineering teams (modelers and non-modelers) within the organization
- Keep stakeholders and engineering teams up to date with precise, consistent information from the single source of truth – the model repository
- Review and provide feedback to model authors
- Approve content

Collaborator is designed for the following types of users:

- Non-modelers – users who were not trained in MagicDraw nor equipped with it, and do not have good command of modeling languages like UML, SysML, UPDM, BPMN, or others
- Modelers – typically members of engineering teams working on process engineering, requirements, or system designs

Graphical Comments

One of the most innovative capabilities the product has, is the ability to graphically comment on published diagrams. The primary use case for graphical commenting is the ability to add missing links between elements (e.g., stating that a connector is missing between two parts), or specifying that some elements need to be introduced in a diagram (e.g., a new subtask between two other subtasks in a BPMN diagram).



Textual Comments

Cameo Collaborator supports textual commenting in addition to graphical commenting.

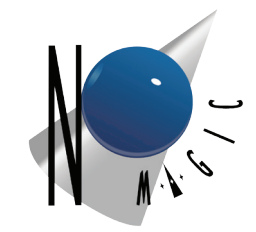
Customizable Review Workflows

The product supports review workflows. Review workflows show at a glance the status of review tasks. Email notifications are also sent to those involved in the review.

Editions

	Free Edition	5	10	50	100	Unlimited
Commenting	-	+	+	+	+	+
Portal customizability	+	+	+	+	+	+
# of connections	10	5	10	50	100	Unlimited
Publisher price	Free	Free	Free	Free	Free	Free
Server price	Free	Contact No Magic	Contact No Magic	Contact No Magic	Contact No Magic	Contact No Magic

For more information about Cameo Collaborator, go to <http://www.nomagic.com/products/cameo-collaborator>



The Truth is in the Models™

No Magic, Inc.
 One Allen Center
 700 Central Expressway South, Suite 110
 Allen, Texas 75013
 Phone 214.291.9100
 E-mail: sales@nomagic.com
www.nomagic.com